

## Oils & Fats Equipment and Technology

QUALITY CREATES FUTURE





Myande is an internationally recognized company providing technology and complete plants for oilseeds pre-pressing and preparation, solvent extraction, edible oil refining, oleochemical and related consumer product industries. More than 200 complete plants have been supplied under the Myande's name in around 600 different countries.

**Design and Technical Support**  
**Strict Quality Management System**  
**Equipment Manufacturing Standards**  
**Customer Service**

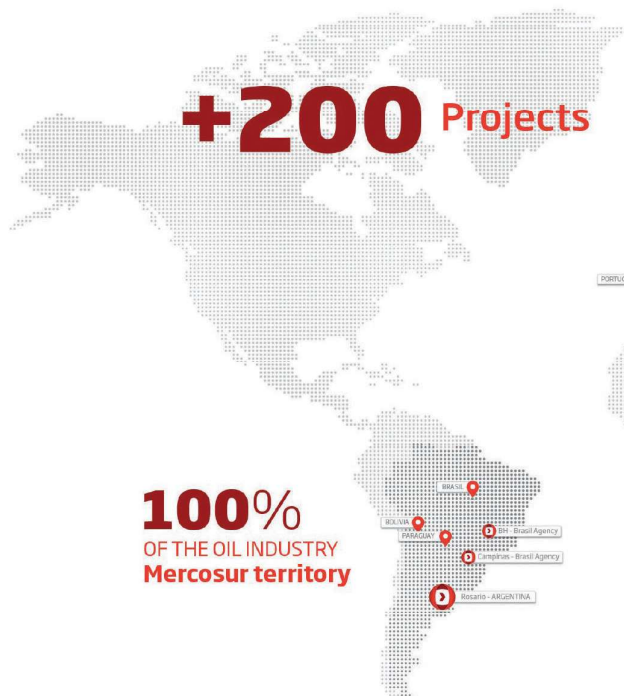


**Turn Key Plants**

Custom & Reliable solutions for grain Processing Plants

We offer engineering , supplying and commissioning turn – key Plant.

Our one – stop solution will save your time , money and will increase profits as a result of higher quality product and improved plant efficiency.





# Manufacturing Facilities



1	3	1 Machining Center
	4	2 Equipment Assembly
2	5	3 Laser Cutting Machine
		4 Welding Robot
		5 Powder Coating & Spray Painting



# Oilseeds Preparation & Extraction Technology

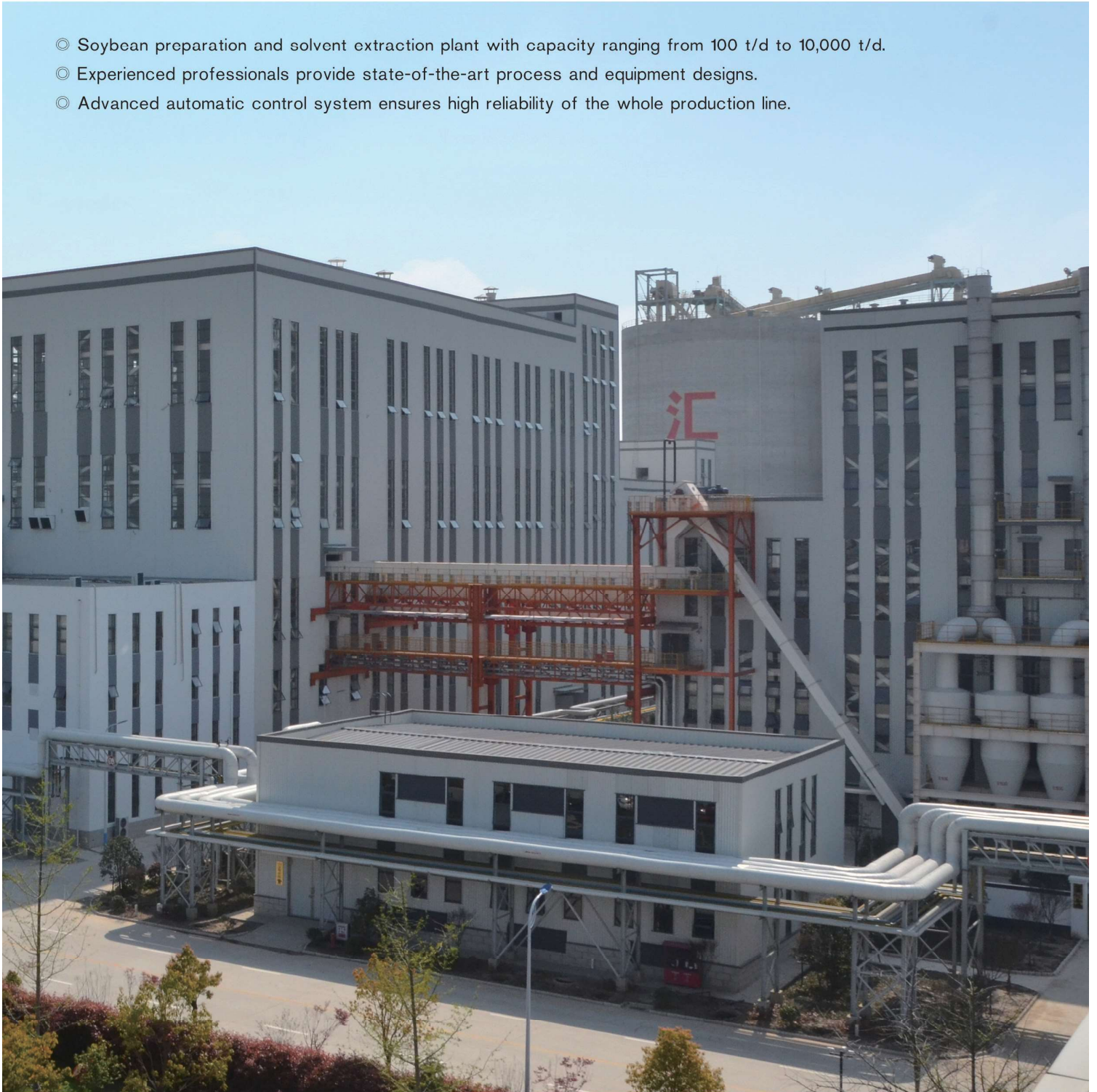
## For Soybean



2X5,000 t/d Soybean Preparation and Extraction Lines



- ◎ Soybean preparation and solvent extraction plant with capacity ranging from 100 t/d to 10,000 t/d.
- ◎ Experienced professionals provide state-of-the-art process and equipment designs.
- ◎ Advanced automatic control system ensures high reliability of the whole production line.





## For Soybean



1			
2	3	4	

- 1 5,000 t/d Soybean Preparation and Extraction Project
- 2 2×5,000 t/d Soybean Preparation and Extraction Lines
- 3 Cracking Section
- 4 Flaking Section





	1	
2	3	4

- 1 5,000 t/d Soybean Preparation and Extraction Project
- 2 500 t/d Soybean Preparation and Extraction Project
- 3 1,000 t/d Soybean Preparation and Extraction Project
- 4 2,500 t/d Soybean Preparation and Extraction Project



## For Canola Seeds



- ◎ Canola seeds pre-pressing and solvent extraction plant with capacity ranging from 100 t/d to 3,000 t/d.
- ◎ Complete engineering services including process and equipment design, fabrication, installation & commissioning, and after-sale technical support.

	1	
2	3	4

- 1 2,000 t/d Canola Seeds Pre-pressing and Extraction Project
- 2 3,000 t/d Canola Seeds Pre-pressing and Extraction Project
- 3 Cooking Section
- 4 Pressing Section





	1	
2	3	4

- 1 2,000 t/d Canola Seeds Pre-pressing and Extraction Project
- 2 1,200 t/d Canola Seeds Pre-pressing and Extraction Project
- 3 2,500 t/d Canola Seeds Pre-pressing and Extraction Project
- 4 3,000 t/d Canola Seeds Pre-pressing and Extraction Project



## For Sunflower Seeds



- ◎ Sunflower seeds pre-pressing and solvent extraction plant with capacity ranging from 100 t/d to 2,000 t/d.
- ◎ Advanced automatic control system ensures high reliability of the whole production line.
- ◎ Experienced professionals provide state-of-the-art process and equipment designs.

	1	
2	3	4

- 1 2,000 t/d Sunflower Seeds Pre-pressing and Extraction Project
- 2 Pre-pressing Workshop
- 3 1,200 t/d Sunflower Seeds Pre-pressing and Extraction Project
- 4 800 t/d Sunflower Seeds Pre-pressing and Extraction Project





## For Cotton Seeds



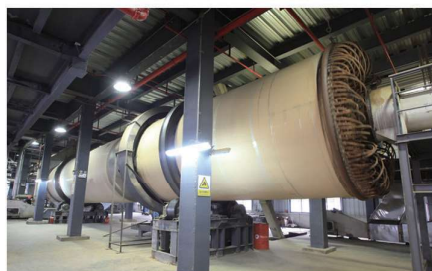
- ◎ Cotton seeds pre-pressing and solvent extraction plant with capacity ranging from 30 t/d to 2,000 t/d.
- ◎ Experienced professionals provide state-of-the-art process and equipment designs.
- ◎ Advanced automatic control system ensures high reliability of the whole production line.

	1	
2	3	4

- 1 1,000 t/d Cotton Seeds Pre-pressing and Extraction Project
- 2 Screening Section
- 3 Cooking Section
- 4 Pressing Section



## For Corn Germ



- ◎ Corn germ pre-pressing and solvent extraction plant with capacity ranging from 50 t/d to 1,000 t/d.
- ◎ Complete engineering services including process and equipment design, fabrication, installation & commissioning, and after-sale technical support.

	1	
2	3	4

- 1 700 t/d Corn Germ Pre-pressing and Extraction Project
- 2 Cooking Section
- 3 120 t/d Corn Germ Extraction Project
- 4 300 t/d Corn Germ Pre-pressing and Extraction Project





## For Rice Bran



- ◎ Rice bran preparation and solvent extraction plant with capacity ranging from 50 t/d to 300 t/d.
- ◎ Experienced professionals provide state-of-the-art process and equipment designs.
- ◎ Advanced automatic control system ensures high reliability of the whole production line.



## For Palm & Palm Kernel



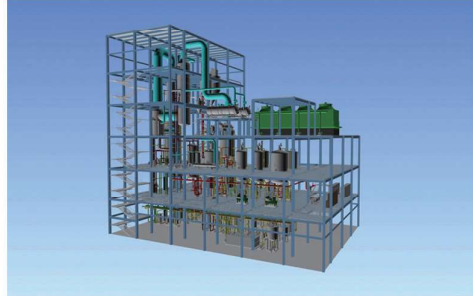
- ◎ Palm and palm kernel preparation and solvent extraction plant with capacity ranging from 100 t/d to 3,000 t/d.
- ◎ Complete engineering services including process and equipment design, fabrication, installation & commissioning, and after-sale technical support.

# Vegetable Oil Refining Technology



- ◎ Vegetable oil refining plant with capacity ranging from 50 t/d to 3,000 t/d.
- ◎ Complete engineering services including process and equipment design, fabrication, installation & commissioning, and after-sale technical support.
- ◎ Advanced automatic control system ensures high reliability of the whole production line.





- |   |   |           |  |
|---|---|-----------|--|
|   | 2 | 3         | 1 2×1,000 t/d Vegetable Oil Refining Lines |
|   | 2 | 3D Design |  |
| 1 | 4 | 5         | 3 Piping                                   |
|   | 6 | 7         | 4 Neutralization Section                   |
|   |   |           | 5 Filtration Section                       |
|   |   |           | 6 Automatic Control                        |
|   |   |           | 7 600 t/d Vegetable Oil Refining Project   |

# White Flake and Protein Technology



- ◎ Undertaking soybean white flakes, SPC and SPI projects and providing engineering services for upgrading existing lines with capacity ranging from 100t/d to 1,200t/d.
- ◎ Undertaking cotton seeds dephenolized protein projects and providing engineering services for upgrading existing processing line with capacity ranging from 100t/d to 1,000t/d.
- ◎ Complete engineering services including process and equipment design, fabrication, installation & commissioning, and after-sale technical support.

	1	
2	3	4

- 1 1,200 t/d Soybean White Flake and Protein Project
- 2 Cracking Section
- 3 Low Temperature Desolventizing Drum
- 4 Jet Dryer



## Oils & Fats Equipment



### Vertical Oilseed Conditioner

Myande YGZT Series Vertical Oilseed Conditioner is designed for regulating moisture and temperature of oilseeds through applying indirect steam in edible oil industry.

- ◎ Processing capacity from 500 to 5,000t/d.
- ◎ Modular design to facilitate assembling, dismantling and maintenance.
- ◎ Oval stainless steel heating tubes with ideal heat conductivity.
- ◎ Combination of steam and hot air for desirable conditioning and drying effect.



### Horizontal Drum Cooker

Myande YRGW Series Horizontal Drum Cooker is specially designed for regulating moisture and temperature of various oilseeds for the purpose of making the oilseeds meet with the requirements of subsequent extraction process.

- ◎ Processing capacity from 500 to 2,000t/d.
- ◎ Two-way rotary joints and siphon drainage.
- ◎ Stepless speed regulation.



### Vertical Oilseed Cooker

Myande YZCL Series Vertical Oilseed Cooker is specially designed for heating and cooking corn germ, groundnut and soybean for the purpose of improving oil extraction efficiency and oil quality.

- ◎ Technical standards of pressure vessels.
- ◎ Reliable level indication.
- ◎ Optimized automatic gate design.



## Oilseed Cracker

Myande MPSG Series Oilseed Cracker is known worldwide for high-stability, low-consumption, trouble-free performance in oilseed processing industry.

- ◎ Processing capacity from 500 to 1,500t/d.
- ◎ Unique roll gap adjustment mechanism.
- ◎ Easy maintenance, safe operation and compact design.
- ◎ Available in single level, double level and tri-level designs.



## Oilseed Flaker

Myande MZPG Series Oilseed Flaker is known worldwide for high-stability, low-consumption, trouble-free performance in oilseed processing industry.

- ◎ Processing capacity from 300 to 500t/d.
- ◎ Flake thickness adjustment during operation.
- ◎ High transmission efficiency and low energy consumption.
- ◎ Patented roll end baffling device.



## Aspirator

Myande TFXX Series Aspirator is designed to remove loose hulls and foreign material in oilseed preparation section.

- ◎ Multi-stage impact for high efficiency of seed hull separation.
- ◎ Easily maintaining internal humidity and air temperature.





## Loop Chain Conveyor

Myande MGS Series Oilseed Loop Chain Conveyor is specially designed self-cleaning continuous transportation equipment for conveying powdery, flaking, and granule materials in various industries including edible oil processing, food processing and animal feed processing.

- ◎ Highly integrated and efficient process and layout planning.
- ◎ Optimized mechanism capable of multiple-point feeding and discharge.
- ◎ Full range of electrical components for general reliability.



## Drag Conveyor

Myande MMST Series Drag Conveyor is optimized conveying equipment specially designed for transportation of soybean, cotton seed, canola seed, corn germ, meals and other processed materials in edible oil industry.

- ◎ High strength whole-piece structure.
- ◎ Highly user-friendly structure.
- ◎ Flexible conveying mode design.



## Elevation Drag Conveyor

Myande YMC Series Elevation Drag Conveyor is specially designed self-cleaning continuous conveying equipment for powdery, flaking, and granule materials in various industries including edible oil processing, food processing, starch processing, and animal feed processing.

- ◎ Unique sealing mechanism.
- ◎ Full range of electrical devices for general reliability.
- ◎ High strength bending chains.



## Solvent Extractor

- ◎ High reliability and extraction efficiency.
- ◎ Low solvent and energy consumption.
- ◎ Unique duel hydraulic motor driving mechanism.
- ◎ Stainless steel 304 body and screen.



## D.T.D.C.

Myande D.T.D.C (Desolventizer-Toaster-Dryer-Cooler) is specially designed equipment that effectively integrates meal desolventizing, toasting, drying and cooling functions into one system.

- ◎ Low steam consumption.
- ◎ High-efficiency recovery of solvent.
- ◎ Capable of separating DT and DC for large processing capacity.



## Lecithin Dryer

- ◎ High-precision bearing and bearing blocks with automatic cooling system.
- ◎ Reliable sealing device for fast rotating components.
- ◎ Mirror-polished stainless steel inner wall.
- ◎ Rotor scraper device with accurate control of scraper-wall clearance.
- ◎ Distribution disk forcing material to flow evenly.





## Low Temperature Desolventizing Drum

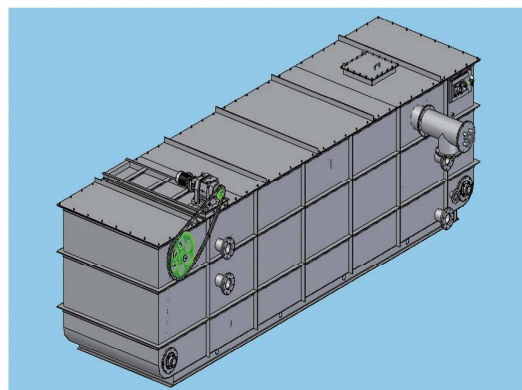
Myande YDA and YDB Series Low Temperature Desolventizing Drum (A & B Drums) is ideal equipment complete with effective heating and agitation mechanisms to ensure thorough desolventizing and minimized protein denaturation at low temperature.

- ◎ Floating supporting mode.
- ◎ Automatic sealing gap and position adjustment.
- ◎ High efficiency and low power consumption.



## Oil Dryer

- ◎ High vacuum value conducive to moisture removal.
- ◎ Even material distribution.
- ◎ Suitable for large scale continuous production.



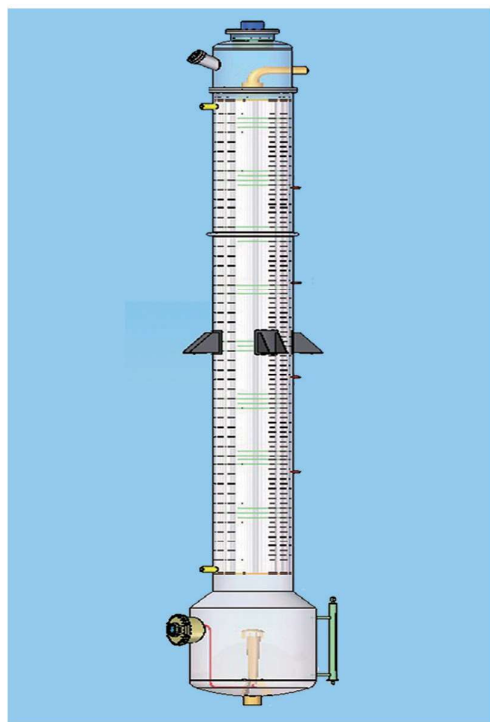
## Settling Tank

- ◎ Simple and ideal structure—easy for maintenance.
- ◎ Unique material flow and movement devices improving oil quality.
- ◎ Reliable running, low power consumption, less wearing and long life.
- ◎ Long detearing time and low oil content in dregs.



## Condenser

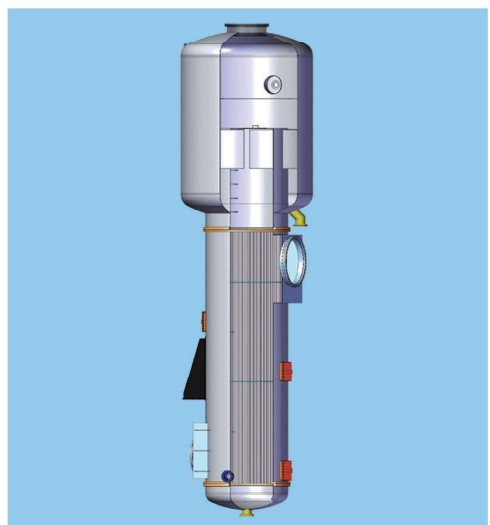
- ⊙ Horizontal structure and thin wall made of stainless steel.
- ⊙ Vacuum condensation process.
- ⊙ Highly efficient counter current heat exchange.



## Vacuum Heat Exchanger

Myande Vacuum Heat Exchanger is a significant part in heat recovery system of oil deodorizing.

- ⊙ High heat transfer efficiency.
- ⊙ Low energy requirement.
- ⊙ High-reliability and maintenance-free.

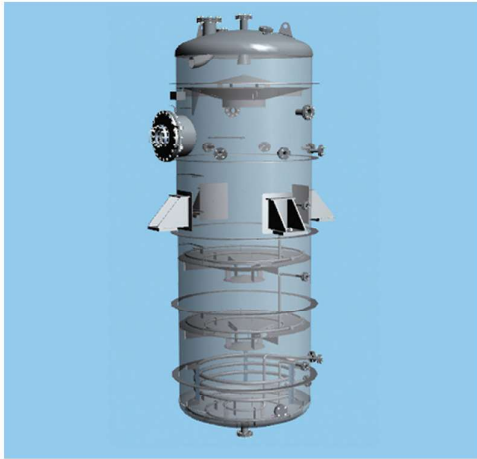


## 1st Stage Evaporator

Myande 1st Stage Evaporator is a significant part in heat recovery system of oil extraction plant.

- ⊙ High heat transfer efficiency.
- ⊙ Low energy requirement.
- ⊙ High-reliability and maintenance-free.





## Bleacher

Myande Bleacher is a two-stage vessel. Oil and bleaching earth mixture is introduced under vacuum into the top stage where it is heated and continuously agitated by injected sparge steam or mechanical blade.

- ◎ Low bleaching earth consumption.
- ◎ High bleaching efficiency.
- ◎ Choice of mechanical or steam-agitation.
- ◎ Available steam coil for additional heat.



## Deodorizer

Myande Combined Type Deodorizer is widely used in removing odoriferous material, free fatty acid (FFA) and other undesired minor components to produce high-quality oil in crude oil refining industry.

- ◎ Low steam consumption.
- ◎ High deodorizing efficiency.
- ◎ Adjustable time in process.
- ◎ Individual vacuum system.

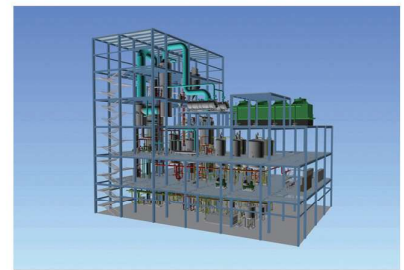
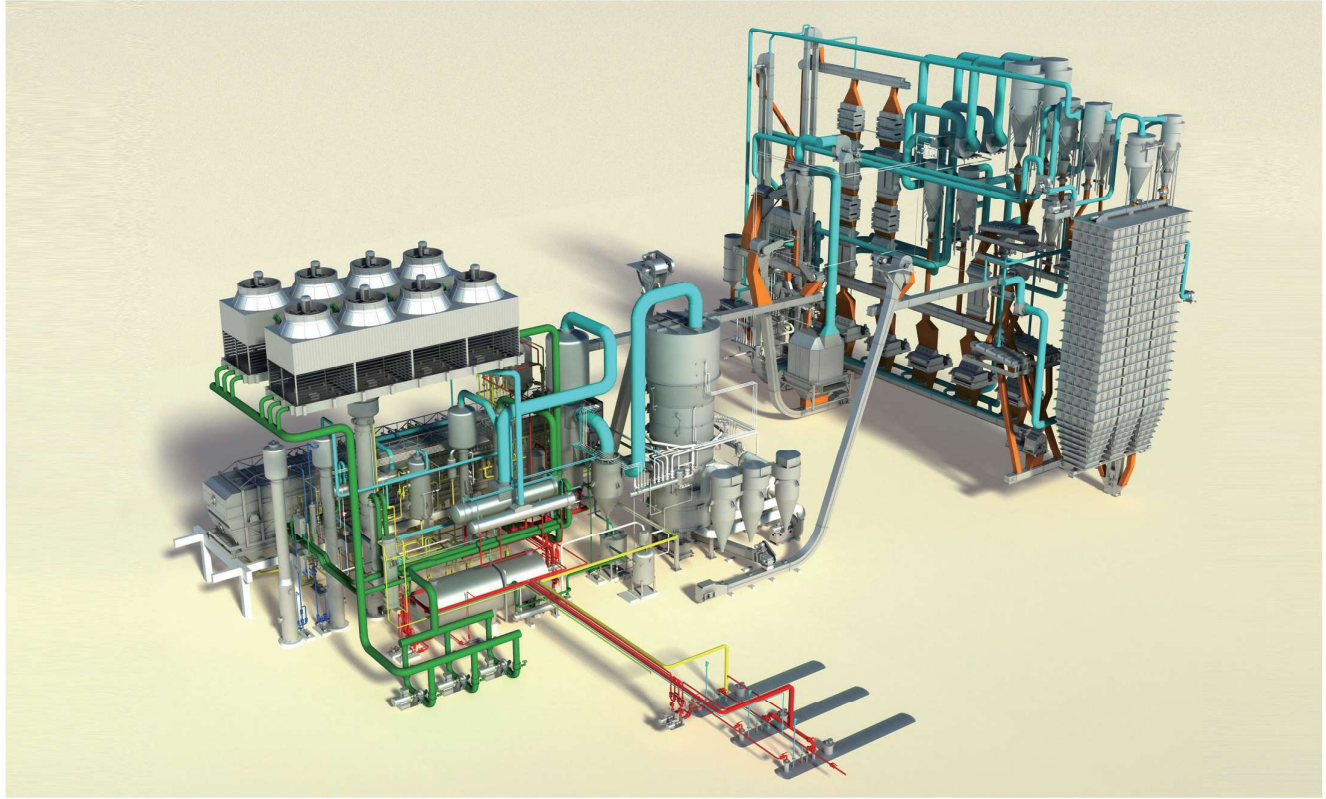


## Crystallizer

Myande Crystallizer is mainly used for dewaxing or fractionating palm oil, palm kernel oil, corn oil, rice bran oil, sunflower oil and other vegetable oil.

- ◎ Vertical agitation device and double-layer coil for sufficient heat exchange.
- ◎ High heat transfer efficiency.
- ◎ Capable of continuous feeding and discharging.

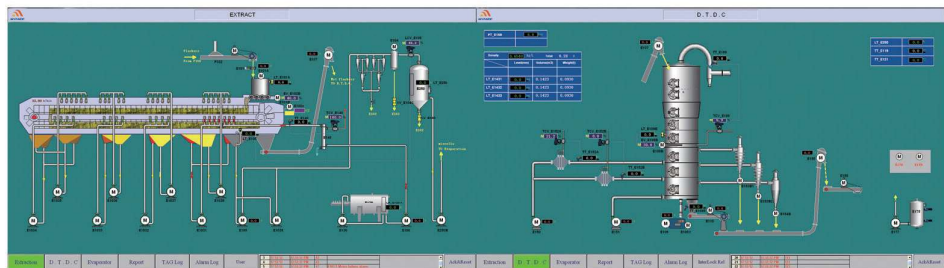
## 3-Dimensional Design



On the basis of graphic design, combined with real situation, we can design a three-dimensional model of the entire plant. All the equipment, piping and instruments, any detail can be shown in the model, not only allowing you to have an intuitive understanding of the plant, but also providing overall information support for plant construction, equipment installation and future expansion.



# Automatic Control System



- ◎ PLC / DCS control system with customized control process.
- ◎ Fully computerized high precision adjustment of process parameters.
- ◎ Capability of monitoring remote plants from head office.
- ◎ Lower operating personnel requirement.

## Assembly Workshop





## Shipment & Installation





## MYANDE GROUP CO., LTD.

Add: No.199, South Ji'An Road, Yangzhou, Jiangsu, China

Tel: +86-514-8784 9111

Fax: +86-514-8784 8883

P.C: 225127

Web: [www.myandegroup.com](http://www.myandegroup.com)

E-mail: [lxid@myande.com](mailto:lxid@myande.com)

[myande@gmail.com](mailto:myande@gmail.com)



▼  
**ARGENTINA Headquarters**  
Juan Pablo II 6750 (S2010AMP)  
Rosario, Santa Fe. ARGENTINA.  
Phone: +54 341 4-544544  
Fax: +54 341 4-545050  
[proglobal@proglobal.com](mailto:proglobal@proglobal.com)

▼  
**BELO HORIZONTE, BRAZIL Agency**  
Av. Brasil 1438, Ed. Agmar Glass Tower  
Sala 0407. Belo Horizonte.  
Minas Gerais (30140-003) BRASIL.  
Phone: +55 31 3213-0741  
[belohorizonte@proglobal.com](mailto:belohorizonte@proglobal.com)

▼  
**CAMPINAS, BRAZIL Agency**  
Av. Antonio Artoli 570. Swiss Park Office,  
Edificio Zug, Sala 64, Bloco A. Campinas.  
São Paulo (13049-900) BRASIL.  
Phone: +55 19 3778-9696  
[campinas@proglobal.com](mailto:campinas@proglobal.com)